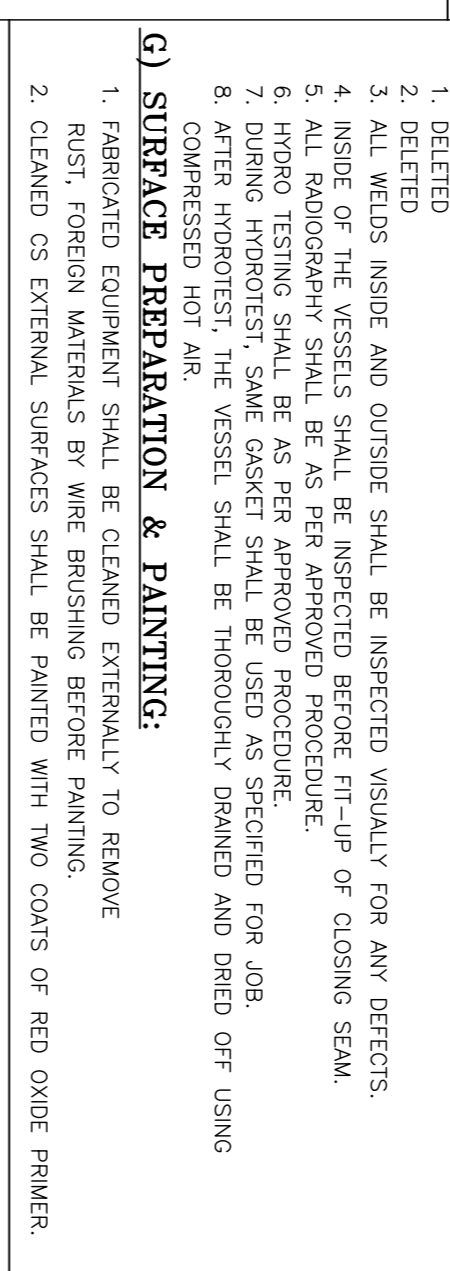
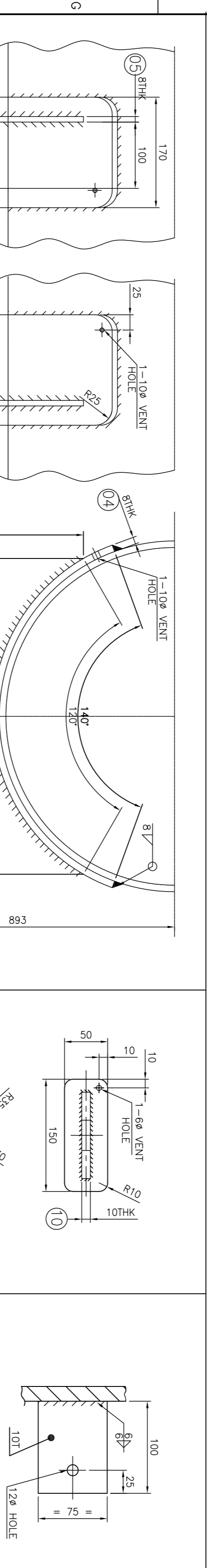


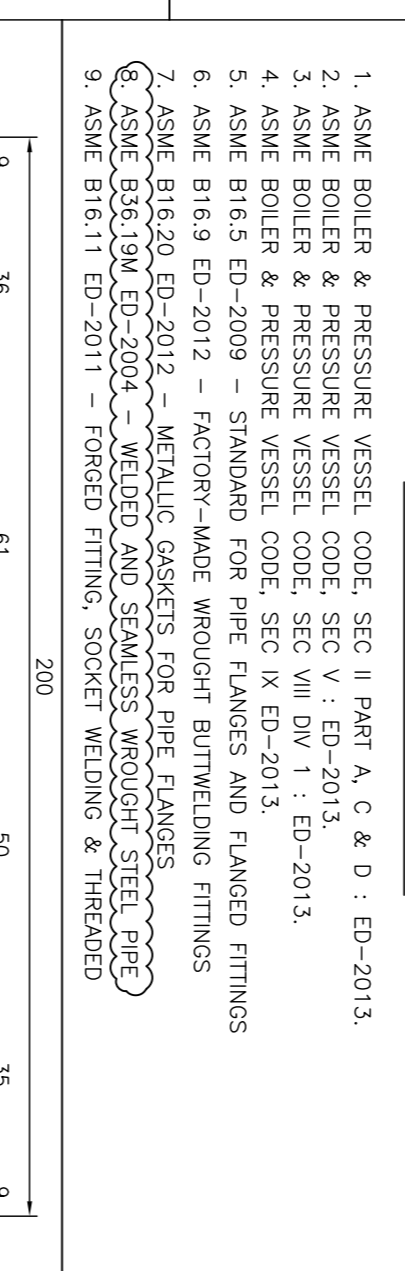
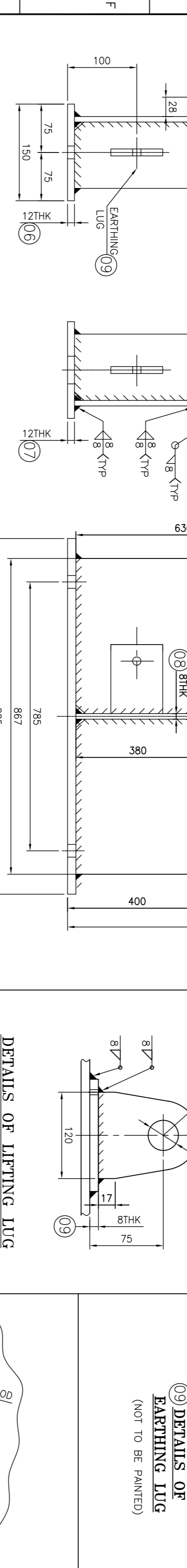
DESIGN DATA

1	CONFIGURATION	HORIZONTAL
2	SERVICE (LETHAL OR NON-LETHAL)	NON-LETHAL
3	DESIGN & MANUFACTURING CODE	ASME SEC VIII DIV. 1 ED-2013
4	ASME CERTIFICATION MARK	YES (WITH U DESIGNATOR)
5	DESIGN PRESSURE INTERNAL	1.9 MPa(g) (19 bar(g))
6	MAWP (HOT & COLD) - INTERNAL	1.9 MPa(g) (19 bar(g)) (SEE NOTE A4)
7	EXTERNAL DESIGN PRESSURE	N/A
8	MAWP (HOT & COLD) - EXTERNAL	N/A
9	DESIGN TEMPERATURE INTERNAL/EXTERNAL	-20°C (at 1.9MPa)
10	MOV'T	NIL
11	CORROSION ALLOWANCE	NIL
12	RADIOPHANTH (SHELL/END)	SPT / FULL
13	JOINT EFFICIENCY (SHELL/END)	0.85 / 1.0
14	OPERATING PRESSURE	0.2942 MPa(g) (2.942 bar(g))
15	OPERATING TEMPERATURE	50°C
16	DESIGN MEDIUM	COBALT (EHL) MFC/PROP/BN W/RES/SPOT LEAK (1007)/NH
17	DENSITY	g/cc 0.81-0.845
18	GROSS VOLUME	m ³ -224
19	INSULATION THICKNESS	MM NIL
20	FIRE PROOING THICKNESS	MM NIL
21	HYDROTEST PRESSURE	2.72 MPa(g) (27.2 bar(g)) (PER CUSTOMER REQUIREMENT)
22	RECOMMENDED HYDROTEST TEMPERATURE (MM/MAX)	°C 17 TO 40
23	PRELIMINARY TEST PRESSURE	N/A. AS PER IS-1893 SCM
24	SEISMIC CODE	YES. AS PER IS-875 BASIC WIND SPEED-16.2 Km/H
25	WIND CODE	NIL (EXEMPTED AS PER IMA-32)
26	POST WELD HEAT TREATMENT	EXEMPTED (AS PER UCS-200). UCS-86c & GENERAL NOTE-C)
27	IMPACT TESTING	UC-220(D)(1)(2)(1)(1)
28	OTHER LOADINGS AS PER UC-22	N/A
29	EMPTY WEIGHT	kg 2222
30	HYDRO TEST WEIGHT	kg 2222
31	NATIONAL BOARD REGISTRATION	NOT REQUIRED



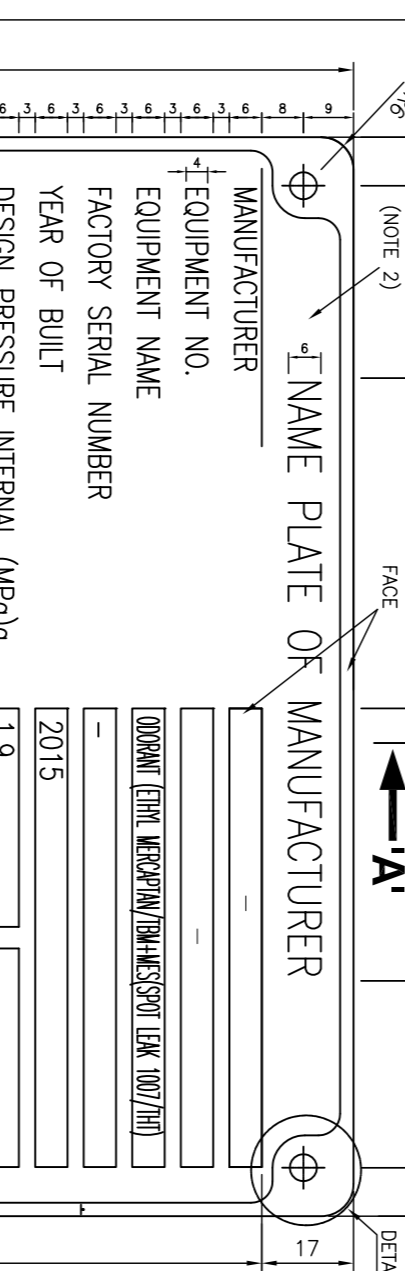
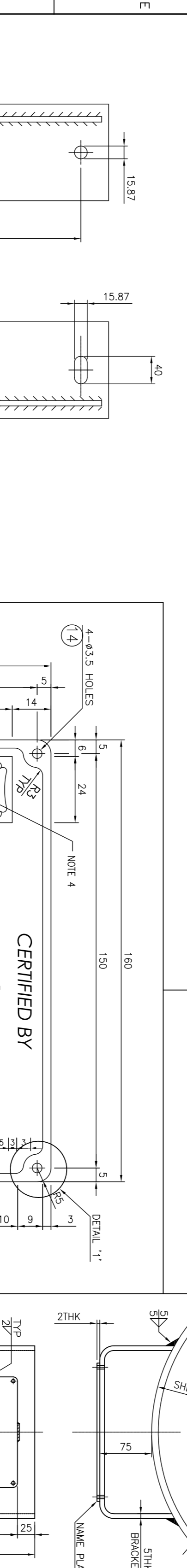
APPLICABLE LOADING AS PER UC-22

SHNO	DESCRIPTION	APPLICABLE
(a)	(1) INTERNAL PRESSURE	YES
(b)	(2) EXTERNAL PRESSURE	NO
(c)	WEIGHT OF VESSEL, NORMAL CONTENTS UNDER OPERATING AND STATIC CONDITIONS	YES
(d)	SUPERIMPOSED STATIC REACTIONS FROM WEIGHT OF ATTACHED EQUIPMENTS ETC.	NO
(e-1)	THE ATTACHMENT OF INTERNALS	NO
(e-2)	THE ATTACHMENT OF VESSEL SUPPORTS	YES
(f)	CYCLIC AND DYNAMIC REACTIONS DUE TO PRESSURE OR THERMAL VARIATIONS, OR FROM EQUIPMENT MOUNTED ON A VESSEL, AND MECHANICAL LOADINGS.	NO
(g)	WIND LOADING	YES
(h)	SEISMIC LOADING	YES
(i)	SNOW LOADING	NO
(j)	IMPACT REACTIONS	NO
(k)	TEMPERATURE GRADIENT AND DIFFERENTIAL THERMAL EXPANSION	NO
(l)	ABNORMAL PRESSURES, SUCH AS THOSE CAUSED BY DEFLAGRATION	NO
(m)	TEST PRESSURE AND CONJOINT STATIC HEAD ACTING DURING TEST (UC-99)	YES



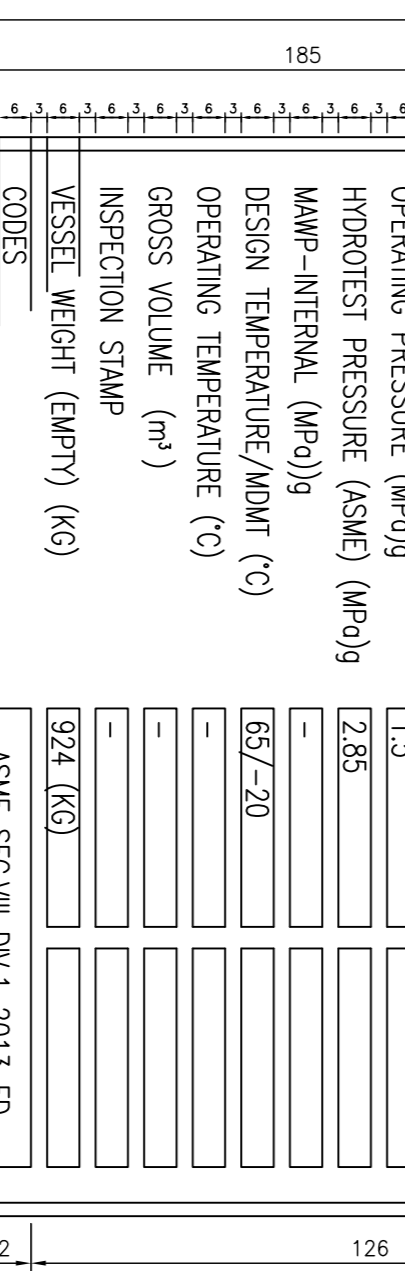
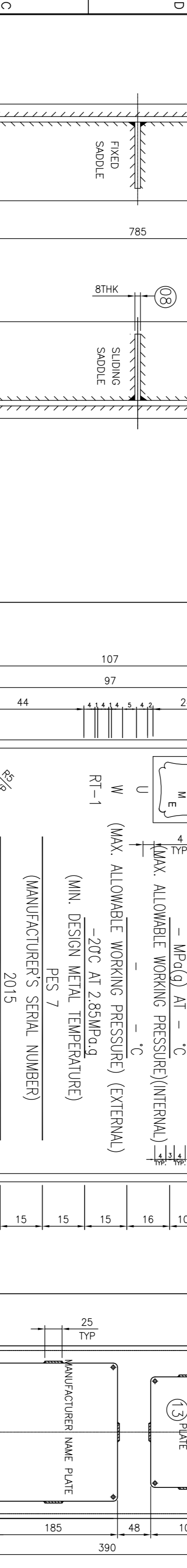
APPLICABLE STANDARDS

- ASME BOILER & PRESSURE VESSEL CODE, SEC II PART A, C & D : ED-2013.
- ASME BOILER & PRESSURE VESSEL CODE, SEC V : ED-2013.
- ASME BOILER & PRESSURE VESSEL CODE, SEC VIII DIV. 1 : ED-2013.
- ASME B16.5 ED-2012 - STANDARD FOR PIPE FLANGES AND FLANGED FITTINGS
- ASME B16.9 ED-2012 - FACTORY-MADE WROUGHT BUTTWELDING FITTINGS
- ASME B16.10 ED-2012 - METALLIC GASKETS FOR PIPE FLANGES
- ASME B16.11 ED-2011 - FORGED FITTING, SOCKET WELDING & THREADED



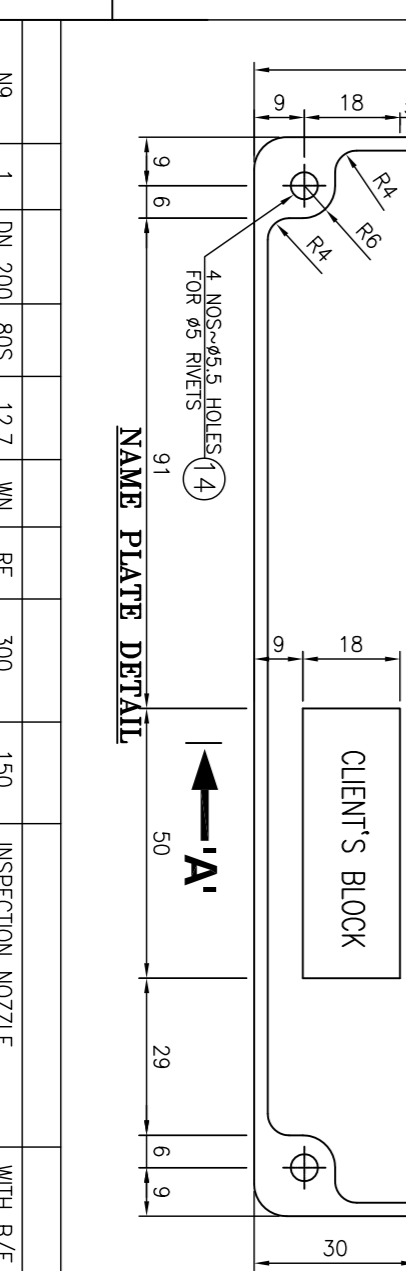
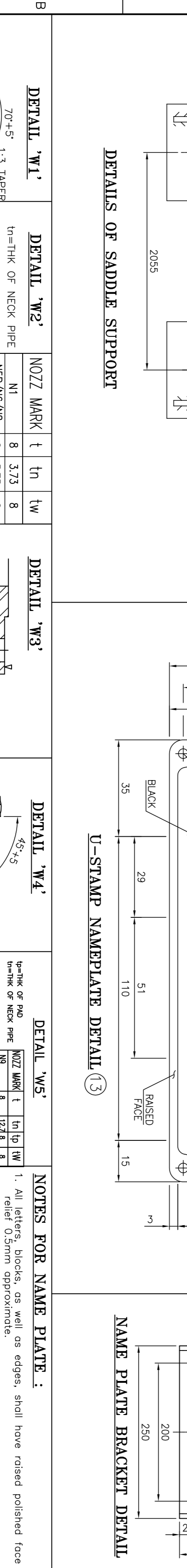
NAME PLATE OF MANUFACTURER

MANUFACTURER	—
EQUIPMENT NO.	—
EQUIPMENT NAME	—
FACTORY SERIAL NUMBER	—
YEAR OF BUILT	2015
DESIGN PRESSURE INTERNAL (MPa/g)	1.9
OPERATING PRESSURE (MPa/g)	1.5
HYDROTEST PRESSURE (MPa/g)	2.95
MAWP-INTERNAL (MPa/g)	—
DESIGN TEMPERATURE/AMDT (°C)	65/-20
OPERATING TEMPERATURE (°C)	—
GROSS VOLUME (m ³)	—
INSPECTION STAMP	—
VESSEL WEIGHT (EMPTY) (KG)	924 (KG)
ASME SEC.VIII DIV.1 2013 ED.	—
CLIENT'S BLOCK	—



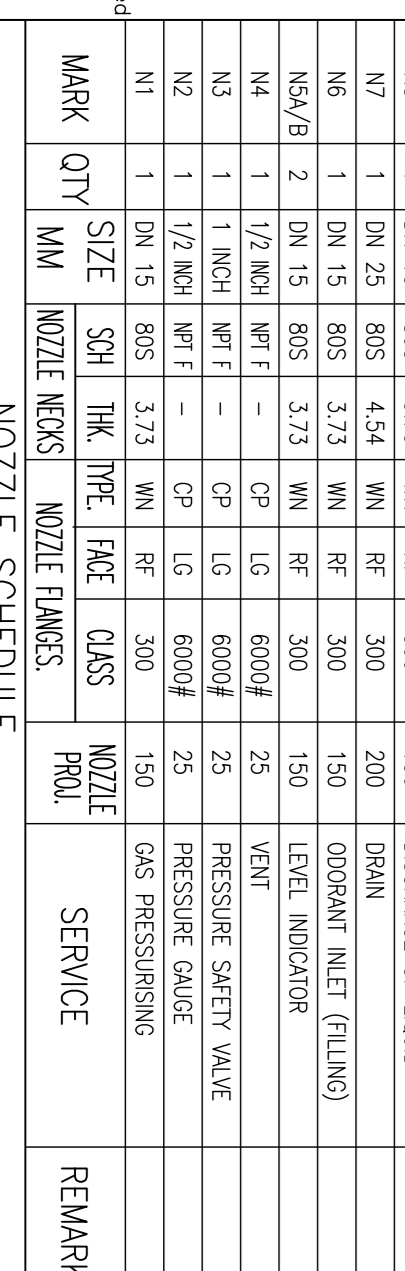
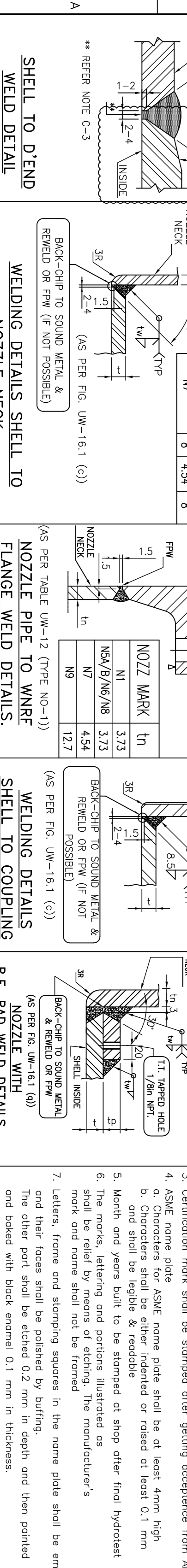
NAME PLATE DETAIL

NO.	DESCRIPTION.	QTY.	MATERIAL.	SIZE.	REMARKS
1	U-STAMP	1	AL	36 x 10 LG	
2	NAME PLATE BRACKET	1	SA240 GR.304	5THK x 107 x 160	
3	LIFTING LUG	2	SA240 GR.304	10THK x 50 x 120 LG	
4	BASE PLATE FOR LIFTING LUOS	2	SA240 GR.304	10THK x 90 x 150 LG	
5	SUPPORTER	2	SA240 GR.304	12THK x 100W x 300LG	
6	BASE PLATE - SLIDING	1	SA2062 GR.A	12THK x 150W x 385LG	
7	WEB PLATE	2	SA2062 GR.A	8THK x 150W x 385LG	
8	FLANGE FOR SUPPORT	2	SA240 GR.304	8THK x 170W x 109LG	
9	R.H.S OSHED END	1	SA240 GR.304	10 THK x 1231R (BLANK DIA.)	
10	SHELL	1	SA240 GR.304	8 THK x 2283 x 3089	



NAME PLATE DETAIL

NO.	DESCRIPTION.	QTY.	MATERIAL.	SIZE.	REMARKS
1	U-STAMP	1	AL	36 x 10 LG	
2	NAME PLATE BRACKET	1	SA240 GR.304	5THK x 107 x 160	
3	LIFTING LUG	2	SA240 GR.304	10THK x 50 x 120 LG	
4	BASE PLATE FOR LIFTING LUOS	2	SA240 GR.304	10THK x 90 x 150 LG	
5	SUPPORTER	2	SA240 GR.304	12THK x 100W x 300LG	
6	BASE PLATE - SLIDING	1	SA2062 GR.A	12THK x 150W x 385LG	
7	WEB PLATE	2	SA2062 GR.A	8THK x 150W x 385LG	
8	FLANGE FOR SUPPORT	2	SA240 GR.304	8THK x 170W x 109LG	
9	R.H.S OSHED END	1	SA240 GR.304	10 THK x 1231R (BLANK DIA.)	
10	SHELL	1	SA240 GR.304	8 THK x 2283 x 3089	



NAME PLATE DETAIL

NO.	DESCRIPTION.	QTY.	MATERIAL.	SIZE.	REMARKS
1	U-STAMP	1	AL	36 x 10 LG	
2	NAME PLATE BRACKET	1	SA240 GR.304	5THK x 107 x 160	
3	LIFTING LUG	2	SA240 GR.304	10THK x 50 x 120 LG	
4	BASE PLATE FOR LIFTING LUOS	2	SA240 GR.304	10THK x 90 x 150 LG	
5	SUPPORTER	2	SA240 GR.304	12THK x 100W x 300LG	
6	BASE PLATE - SLIDING	1	SA2062 GR.A	12THK x 150W x 385LG	
7	WEB PLATE	2	SA2062 GR.A	8THK x 150W x 385LG	
8	FLANGE FOR SUPPORT	2	SA240 GR.304	8THK x 170W x 109LG	
9	R.H.S OSHED END	1	SA240 GR.304	10 THK x 1231R (BLANK DIA.)	
10	SHELL	1	SA240 GR.304	8 THK x 2283 x 3089	

MANUFACTURER'S SERIAL NUMBER : ***

ISSUED FOR APPROVAL

DATE

REVISION DESCRIPTION

BY

CHKD

APP

SIGN

DATE

REVISION DESCRIPTION

BY

CHKD

APP

SIGN