

Clarity

Clarity of thought..... spearheading diagnostic technology



We Truly MAKE IN INDIA
All Modules indigenous.

Clarity Range of Products

Patient Monitoring

- Spectra Gold (15" TFT)
- Spectra Smart+ (12.1" TFT)
- Spectra Slim+ (10.4" TFT)
- Radiant P5 (7" TFT)
- Central Monitoring System

Pulse Oximeter

- OxyPlus 240ST

Spirometer

- SpiroTech
- SpiroTech+

ECG

- ECG 50-1Ch / 2Ch
- ECG 100 4/6Ch / 3Ch
- ClarityECG (PCECG)
- TrueBeat 200
- TrueBeat 100

TMT

- TrueST (Bluetooth / USB Powered)
- TrueST-BT+ (NIBP Automatic)

EMG

- EMG Octopus
- 2 Channels, 4 Channels, 8 Channels

EMG USB

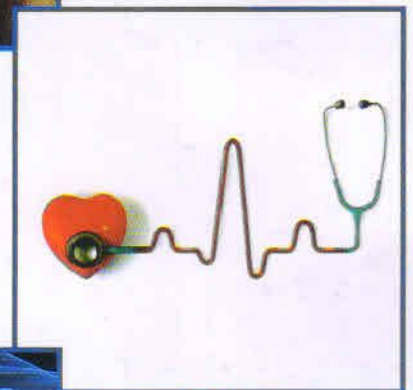
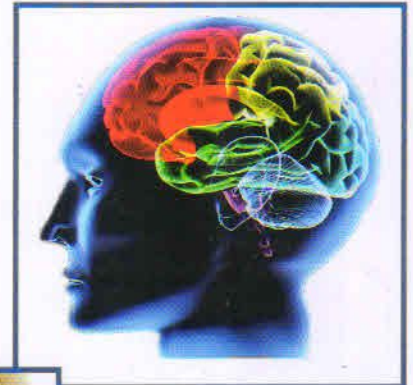
- Portable EMG
- EasyTrace
- 2 Channels

EEG

- EEG (Desktop)
- Brain Tech 40+
- 24 Channels, 32 Channels, 40 Channels
- EEG (Traveler)
- Brain Tech 32+
- 24 Channels, 32 Channels+ Integrated SpO₂ Module

● UP Coming Products

Gas Alarm System with CMS



Certifications: 
ISO 9001
ISO 13485

India Leading Medical Equipments Manufacturer

- Largest Sales & Service network in the country
- More than 25,000 installations under the brand name of Clarity
- Serving the National through our in-house Design & Manufacturing



Spectra Gold

- 15" TFT large (Touch Screen Optional) bright resolution for better visibility (1024 x 768 resolution)
- 8 real time configurable waveform display
- Single knob to browse menus/sub menus
- Design facilitates transit monitoring
- Big font for better viewing from a distance
- Both audio and visual alarms for vital signs

Spectra SMART+

- 12.1" bright Screen TFT for better visibility
- Single knob to browse menus/sub menus
- Multi Color LED for different alarm modes
- 800 x 600 resolution with clear waveform and easy to read numeric values
- Upto 8 Real-time waveforms display
- Capability upto 7 parameters - ECG, SpO2, NiBP, Respiration, Temperature-2Ch, EtCO2, IBP-Single/Dual/Triple Ch (optional)

Spectra SLIM+

- 10.4" bright Screen TFT for better visibility
- (800 x 600 resolution)
- Single knob to browse menus/sub menus
- Night Mode for patient comfort and to enhance TFT file
- Multi Color LED for different alarm modes
- Capability upto 7 parameters - ECG, SpO2, NiBP, Respiration, Temperature.-2Ch, EtCO2, IBP-Single/Dual/Triple Ch (optional)
- Indicators for mains, battery and charging

Radiant P5

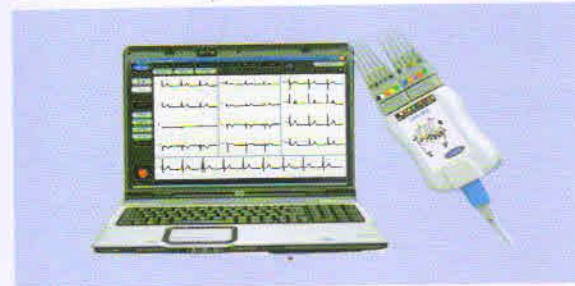
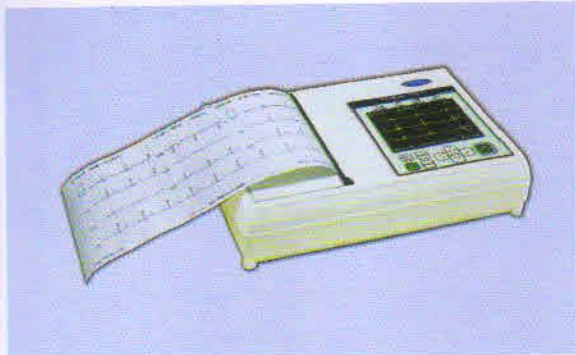
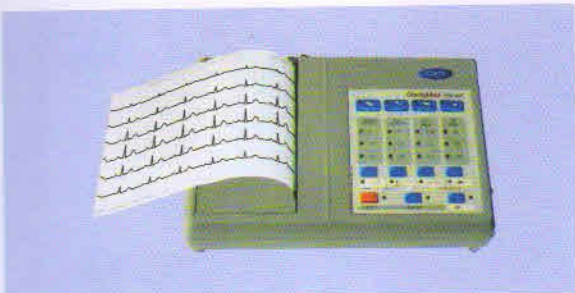
- Color TFT display 7" (800 x 480 resolution)
- Capability upto 5 parameters-ECG, SpO2, NiBP, Respiration, Temperature-1Ch. **Optional** for EtCO2 Module with any other one of the parameter
- Both visual and audible alarms supervision for all vital signs.
- Easy to learn and use with single knob to browse through all menus

OxyPlus 240ST (CMPO-01)

- User friendly-All functions accessible through seven button keypad
- Bright LEDs indicate important functions and settings
- LCD display for pleth, O2 and HR values
- Light weight and portable monitor
- Built-in rechargeable Li-ion battery

SpiroTech+(CMSP-02)

- 3.5" Color TFT display with Touch Screen
- All functions accessible through keypad
- Auto Interpretation
- Small Size light weight and easy to carry
- Automatic power saving mode
- Facility to download data to PC



ECG 100 C (CMECG-03)

- Personalized tracings with user's name (User editable)
- Excellent recording quality with its high resolution printer
- 4 or 6 channel print format
- Detailed Interpretation Package
- Quantitative analysis of the tracings

TrueBeat 100-H (CMECG-06)

- 3.5" Colour TFT display with Touch Screen
- Compact and portable
- Simple operation (Get report with single key press)
- Detailed Interpretation package
- 3/4/6 Channel Print Format*

31 000 L
min

Available Models

- TrueBeat 100 F - 3 Ch Printout, Memory Storage
- TrueBeat 100 G - 4 Ch Printout, Memory Storage

TrueBeat 200 (CMECG-05)

- Color TFT display 7". (800 x 480 resolution)
- Selectable display formats
- Splash-resistant alphanumeric keyboard and direct function keys
- Automatic and Manual mode operation
- 12 leads simultaneous recording: I, II, III, aVR, aVL, and V1-V6 pre-cordials
- Detailed Interpretation package

ClarityECG (CMECG-01)

- Innovative high performance sampling device for desktop as well as for laptop.
- Effective GUI & aesthetics
- Simultaneous 12 Lead Acquisition
- Compact size and lightweight
- Import True ECG data from other location
- Smooth waveform, No pixelization

TrueST-BT (CMECG-02)

- Effective GUI & aesthetics
- Smooth waveform, No pixelization
- Accurate beat detection and Iso, J point marking & result calculations
- Flexible display windows, user configurable with intuitive interface
- Flexible print pages with total preview
- Wireless communication

Clarity IV Alert

- Displays infused volume and target volume.
- Variable target volume and target time selection
- Alarm on target volume
- Easy to mount on any kind of stand
- Rechargeable Lithium-ion battery with backup more than 50 hrs. on continuous operation
- LED indicators for low battery, alarm and charging.



EMG Octopus (CMEMG-01)

- The modular hardware concept allows up to 8 amplifier channels
- Specific function keys support the optimal handling during examination and evaluation
- Powerful integrated stimulators
- Integrated operation panel
- Convenient controls and intuitive user interface
- Sturdy cart with arm



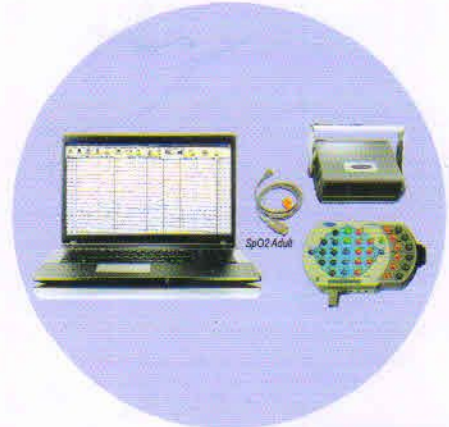
EMG EasyTrace (CMEMG-02)

- USB operated no need of external power
- Automatic saving of test files
- Color coded buttons for easy use
- Robust shock stim handle
- Easy to operate and handle
- Portable and Ultra compact in size
- Powerful integrated stimulators



ElectroRetinoGraphy (CMEMG-02)

- USB operated
- Integrated operation panel
- Extermely low noise amplifiers
- Powerful ERG MiniGanz Stimulator
- Easy data base management
- Convenient controls and intuitive user interface
- Automatic saving of test files
- Specific function keys support the optimal
- Handling during examination and evaluation



EEG (Traveler) (CMEEG-01)

- Most user-friendly tool bar
- Facility of deleting events and comments
- Online/Offline reformatting of Gain, Filter, Sweep Speed
- High advanced database management with different searching options
- Operates with PC USB Power
- Integrated SpO2 Module

Available Models

24 Channels, 32 Channels

EC REP

MT Promedt Consulting GmbH
 Altenhofstrasse 80 66386, St. Ingbert Germany
 Tel.: +49 (0) 6894 581020
 e-mail: info@mt-procons.com
 www.mt-procons.com

Clarity Medical Pvt. Ltd.

Plot No. 1687-A, JLPL Industrial Park Sec. 82 Mohali Punjab
 +91 172 2970711, 2970811, 99157 16391
 sales@clarity-medical.com, helpdesk@clarity-medical.com
 www.clarity-medical.com

* Specifications are subject to change without prior notice.