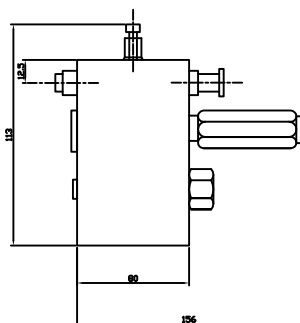


G.A. DRAWING :

TECHNICAL DATA :



Basic Model : MSN

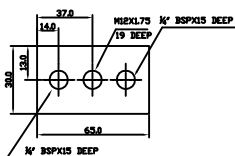
Lubricant : Any Oil or Grease upto NLGI - 0.

Air Inlet : 1/4" BSP female

Lub Inlet : 1/4" BSP female

Mounting : M12x1.75 Bolt - 1 no. on air manifold .

Accessories : Limit switch / Proximity switch.



MODEL	AIR FLOW (at 4-6 bar)	LUBRICANT FLOW (at 2 - 4 bar)	SPRAY DIM- ENSIONS	SPRAY PATTERN
MSN - CC (with closure cap)	15 - 20 l/min	3 - 4 l/hr.	165mm x 70mm	Elliptical
MSN - LS (with limit switch)	15 - 20 l/min	3 - 4 l/hr.	165mm x 70mm	Elliptical
MSN - PS (with proximity switch)	15 - 20 l/min	3 - 4 l/hr.	165mm x 70mm	Elliptical

In this self monitored type spray nozzle, air and liquid (lubricant) control each others flow and then gets mixed to produce completely automatised spray which is indicated through Limit or Proximately switch attached to Nozzle body. Due to controlled operation , air and lubricant is sprayed most efficiently.

Multiline pumps or Pneumatically operated barrel pumps with progressive distributors are used with Spray nozzles to form fully automatic spray lubrication system for lubrication of large open gears of Kiln and Ball mill drives.

Peculiar design of spray nozzle i.e. lubricant and air controlling each other flow, ensures reliable operation and monitoring.