

**EXPERIENCE**

**EXORA**



**A New Level of Dependability  
10kA Modular Devices from L&T**



Maximum Retail Prices  
Effective from 01-11-2013

## About L&T

Larsen & Toubro is a technology-driven company that infuses engineering with imagination. The Company offers a wide range of advanced solutions in the field of Engineering, Construction, Electrical & Automation, Machinery and Information Technology.

L&T Switchgear, a part of the Electrical & Automation business, is India's largest manufacturer of low voltage switchgear, with the scale, sophistication and range to meet global benchmarks. With over five decades of experience in this field, the Company today enjoys a leadership position in the Indian market with a growing international presence.

It offers a complete range of products including powergear, controlgear, industrial automation, building electricals & automation, reactive power management, energy meters, and protective relays. These products conform to Indian and International Standards.



# EXORA

## L&T Modular Devices

L&T's range of modular devices offer MCB, RCCB, Isolator & DB for final distribution of electrical power. L&T's products are better known for reliability, functionality & ease of use.



### L&T modular devices spell world class

L&T products conform to relevant global standards viz. IEC, EN. They also have BIS, CE marking, CB and KEMA certification.

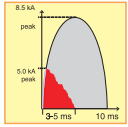
IS | IEC | CE | KEMA | EN





**Safety re-defined**

Finger proof terminals eliminate chances of accidental contact with live part. You can install, operate and maintain modular device with total confidence.



**Energy limiting class - 3**

If an arc occurs, the MCB quickly extinguishes the arc (within 3-5 msec), ensuring lowest possible energy flow through the circuit. This minimizes risk of fire and maximizes life of your equipment.



**Safety meets superior aesthetics**

Ergonomically designed, profiled for superior cooling and manufactured with fire retardant material. Modular device is brought to you keeping in mind utmost user safety.



**Key Benefits**



**True contact indication**

L&T modular device range enhances safety through true contact indication even from a distance regardless of its mounting and knob position. Red and Green indication tags provided below the knob positively identify the electrical ON/OFF status, reflecting actual contact status.



**Integrated label holder**

L&T MCBs are equipped with label holder for easy identification of circuit during operation as well as in maintenance.



**Innovatively profiled breathing channels**

When two or more poles are placed adjacent to each other, the breathing channels are so profiled that the air circulates around individual pole, resulting in cooler operation.



**Large terminal size and dual termination**

L&T MCBs can easily accommodate cables of up to 35 sq. mm. The terminals are designed to facilitate termination of cable or bus bar or both at incoming side.



**Two position DIN rail clip**

Installation on a DIN rail is further simplified with a two-position DIN rail clip as a standard feature. L&T MCB range makes mounting on a standard DIN rail more convenient than most.



**Non-welding contacts**

Silver Graphite contact tips ensure higher life and maximum safety against contact welding due to its superior anti-welding properties, enhancing safety and life of the system.








**Combihead screw**

L&T modular devices with combihead screws, allow you to use standard as well as Philips head screw drivers. L&T modular device range addresses your undefined needs.



# Range Overview

MCB - Miniature Circuit Breaker -----	5	
RCCB - Residual Current Circuit Breaker -----	8	
Isolators -----	10	
Other Protection & Control Devices -----	12	
Distribution Boards -----	15	



# MCB (10kA)

## Miniature Circuit Breaker



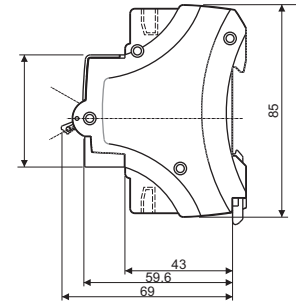
MCB is a vital protection device. It is essential in every electrical installation to safeguard both your life and valuable property against short circuit & overload.

- True contact indication for individual pole
- Label holder facility for all configurations
- Conforms to IS/IEC 60898
- Breaking capacity of 10kA throughout the range
- Available in B, C & D curves
- Low watt loss - almost 50% of the values prescribed by IS/IEC 60898
- Trip free mechanism
- Design based on advanced current limiting hammer trip mechanism
- No Line-Load bias
- Suitable for accessory fitment
- Suitable for DC application, as per IEC 60947-2
- Rated Voltage:130V DC (for SP), 250V DC (for DP in series)\*



## Technical Specifications

Tripping characteristics	B (3 In-5 In), C (5 In-10 In), D (10 In-20 In)
Breaking capacity	10000A as per IS/IEC 60898
Voltage rating	240 / 415V AC
Energy limiting class	3
Terminal capacity	35 sq. mm
Degree of protection	IP20
Tropicalization	T2
Operating temp	-5°C to +55°C



Current Rating (In)	Modules 1 Mod = 17.5 mm	B-Curve Cat. Nos.	M.R.P. (₹) Per Unit	C-Curve Cat. Nos.	M.R.P. (₹) Per Unit	D-Curve Cat. Nos.	M.R.P. (₹) Per Unit
<b>Single Pole (SP)</b>							
0.5A	1	-	-	BB10E50C	300	BB10E50D	300
1A	1	-	-	BB10010C	300	BB10010D	300
2A	1	-	-	BB10020C	300	BB10020D	300
3A	1	-	-	BB10030C	300	BB10030D	300
4A	1	-	-	BB10040C	300	BB10040D	300
6A	1	BB10060B	204	BB10060C	204	BB10060D	265
10A	1	BB10100B	204	BB10100C	204	BB10100D	265
16A	1	BB10160B	204	BB10160C	204	BB10160D	265
20A	1	BB10200B	204	BB10200C	204	BB10200D	265
25A	1	BB10250B	204	BB10250C	204	BB10250D	265
32A	1	BB10320B	204	BB10320C	204	BB10320D	265
40A	1	BB10400B	480	BB10400C	480	BB10400D	495
50A	1	BB10500B	480	BB10500C	480	*	495
63A	1	BB10630B	480	BB10630C	480	*	495
<b>Double Pole (DP)</b>							
0.5A	2	-	-	BB20E50C	800	BB20E50D	815
1A	2	-	-	BB20010C	800	BB20010D	815
2A	2	-	-	BB20020C	800	BB20020D	815
3A	2	-	-	BB20030C	800	BB20030D	815
4A	2	-	-	BB20040C	800	BB20040D	815
6A	2	BB20060B	620	BB20060C	620	BB20060D	665
10A	2	BB20100B	620	BB20100C	620	BB20100D	665
16A	2	BB20160B	620	BB20160C	620	BB20160D	665
20A	2	BB20200B	620	BB20200C	620	BB20200D	665
25A	2	BB20250B	620	BB20250C	620	BB20250D	665
32A	2	BB20320B	620	BB20320C	620	BB20320D	665
40A	2	BB20400B	1060	BB20400C	1060	BB20400D	1025
50A	2	BB20500B	1060	BB20500C	1060	*	1025
63A	2	BB20630B	1060	BB20630C	1060	*	1025

Note: Standard Pack Quantity for MCB : SP - 12 Nos., DP - 6 Nos., TP - 4 Nos., FP - 3 Nos.  
 \* Contact nearest L&T branch office for its availability.



Current Rating (In)	Modules 1 Mod = 17.5 mm	B-Curve Cat. Nos.	M.R.P. (₹) Per Unit	C-Curve Cat. Nos.	M.R.P. (₹) Per Unit	D-Curve Cat. Nos.	M.R.P. (₹) Per Unit
<b>Three Pole (TP)</b>							
0.5A	3	-		BB30E50C	1100	BB30E50D	1120
1A	3	-		BB30010C	1100	BB30010D	1120
2A	3	-		BB30020C	1100	BB30020D	1120
3A	3	-		BB30030C	1100	BB30030D	1120
4A	3	-		BB30040C	1100	BB30040D	1120
6A	3	BB30060B	1000	BB30060C	1000	BB30060D	1020
10A	3	BB30100B	1000	BB30100C	1000	BB30100D	1020
16A	3	BB30160B	1000	BB30160C	1000	BB30160D	1020
20A	3	BB30200B	1000	BB30200C	1000	BB30200D	1020
25A	3	BB30250B	1000	BB30250C	1000	BB30250D	1020
32A	3	BB30320B	1000	BB30320C	1000	BB30320D	1020
40A	3	BB30400B	1550	BB30400C	1550	BB30400D	1570
50A	3	BB30500B	1550	BB30500C	1550	*	1570
63A	3	BB30630B	1550	BB30630C	1550	*	1570
<b>Four Pole (FP)</b>							
0.5A	4	-		BB40E50C	1580	BB40E50D	1590
1A	4	-		BB40010C	1580	BB40010D	1590
2A	4	-		BB40020C	1580	BB40020D	1590
3A	4	-		BB40030C	1580	BB40030D	1590
4A	4	-		BB40040C	1580	BB40040D	1590
6A	4	BB40060B	1360	BB40060C	1360	BB40060D	1390
10A	4	BB40100B	1360	BB40100C	1360	BB40100D	1390
16A	4	BB40160B	1360	BB40160C	1360	BB40160D	1390
20A	4	BB40200B	1360	BB40200C	1360	BB40200D	1390
25A	4	BB40250B	1360	BB40250C	1360	BB40250D	1390
32A	4	BB40320B	1360	BB40320C	1360	BB40320D	1390
40A	4	BB40400B	1990	BB40400C	1990	BB40400D	2005
50A	4	BB40500B	1990	BB40500C	1990	*	2005
63A	4	BB40630B	1990	BB40630C	1990	*	2005

Note: Standard Pack Quantity for MCB : SP - 12 Nos., DP - 6 Nos., TP- 4 Nos., FP - 3 Nos.

\* Contact nearest L&T branch office for its availability.



### Auxiliary & Accessories for 10kA MCB

Description	Cat. Nos.	M.R.P. (₹) Per Unit
Auxiliary Contact - 6A (1NO+1NC), 0.5 Mod	BZA11006	600
Shunt Release - 240V AC, 1 Mod	BZS00240	1595
Undervoltage Release - 240V AC, 1 Mod	BZU00240*	1390

\* Contact nearest L&T branch office for its availability.







# RCCB

Residual Current Circuit Breaker

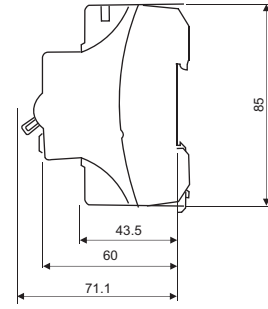


RCCB provides protection against electrical shocks and earth leakage.

- Conforms to IS 12640 (Part 1) / IEC 61008-1
- RCCBs are available in DP and FP versions from 25 to 100A ratings with 30 mA, 100 mA and 300 mA sensitivity
- Truly current operated - operation even at nominal voltage
- Operates on Core Balance Current Transformer (CBCT) principle
- Operation even in case of neutral failure
- Advanced neutral mechanism

## Technical Specifications

Sensitivity	30 mA, 100 mA, 300 mA
Voltage rating	240 / 415V AC
Terminal capacity	50 sq. mm
Degree of protection	IP20
Tropicalization	T2
Operating temp	-5°C to +55°C



Current Rating (In)	Sensitivity	Modules 1 Mod = 17.5 mm	Cat. Nos.	M.R.P. (₹) Per Unit
<b>Double Pole (DP)</b>				
25A	30 mA	2	BG202503	2300
	100 mA	2	BG202510	2340
	300 mA	2	BG202530	2340
40A	30 mA	2	BG204003	2585
	100 mA	2	BG204010	2600
	300 mA	2	BG204030	2600
63A	30 mA	2	BG206303	3245
	100 mA	2	BG206310	3290
	300 mA	2	BG206330	3290
100A	30 mA	2	BG210003	5700
	100 mA	2	BG210010	5525
	300 mA	2	BG210030	5525
<b>Four Pole (FP)</b>				
25A	30 mA	4	BG402503	2910
	100 mA	4	BG402510	2935
	300 mA	4	BG402530	2935
40A	30 mA	4	BG404003	3035
	100 mA	4	BG404010	2950
	300 mA	4	BG404030	2950
63A	30 mA	4	BG406303	3420
	100 mA	4	BG406310	3395
	300 mA	4	BG406330	3395
100A	30 mA	4	BG410003	5985
	100 mA	4	BG410010	5935
	300 mA	4	BG410030	5935



# Isolators

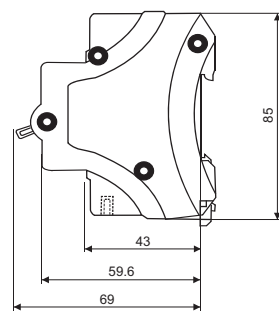


Isolators are used in electrical installation to MAKE, CARRY and BREAK circuit current. The isolator ensure that there will be no current at the load side even if impulse voltage appears when the Isolators is OFF.

- Conforms to IEC 60947-3
- Utilization category AC22-A
- Available in DP, TP and FP versions in 40A, 63A, 80A & 100A ratings

## Technical Specifications

Voltage rating	240 / 415V AC
Utilization category	AC22-A
Terminal capacity	35 sq. mm
Degree of protection	IP20
Tropicalization	T2
Operating temp	-5°C to +55°C



Current Rating (In)	Modules 1 Mod = 17.5 mm	Cat. Nos.	M.R.P. (₹) Per Unit
<b>Double Pole (DP)</b>			
40	2	BF204000	405
63	2	BF206300	520
80	2	BF208000	675
100	2	BF210000	705
<b>Three Pole (TP)</b>			
40	3	BF304000	725
63	3	BF306300	820
80	3	BF308000	890
100	3	BF310000	910
<b>Four Pole (FP)</b>			
40	4	BF404000	920
63	4	BF406300	945
80	4	BF408000	1080
100	4	BF410000	1110



Note: Standard Pack Quantity for Isolator : DP - 6 Nos., TP - 4 Nos., FP - 3 Nos.

# Other Protection & Control Devices



## Moulded Case Circuit Breaker - DU100H

Current Rating (In)	Cat. Nos.	M.R.P. (₹) Per Unit
<b>Single Pole (SP)</b>		
80A	CM97922OOJ2	1000
100A	CM97922OOK2	1000
<b>Double Pole (DP)</b>		
80A	CM97898OOJ2	2800
100A	CM97898OOK2	2800
<b>Three Pole</b>		
80A	CM97894OOJ2	4110
100A	CM97894OOK2	4110
<b>Four Pole</b>		
80A	CM97933OOJ2	5550
100A	CM97933OOK2	5550

Note: 1 Pole of MCCB = 1.5 Modules.



## C-Line On load Changeover Switch Disconnecter

Current Rating (In)	Cat. Nos.	M.R.P. (₹) Per Unit
63A	CO10630OOD	3950
100A	CO11000OOD	5070

Modular Indicator New

Description	Cat. Nos.	M.R.P. (₹) Per Unit
Single Phase Indicator-Red 1 Mod	MM1NDV04	560
Single Phase Indicator-Yellow 1 Mod	MM1NDW04	560
Single Phase Indicator-Blue 1 Mod	MM1NDX04	560
Three Phase Indicator-Red, Yellow & Blue 1 Mod	MM3ND04	780

Modular Energy Meter New

Description	Cat. Nos.	M.R.P. (₹) Per Unit
1-Phase 2-wire 240V, 5-30A	W2DLD050600	2200
3-Phase 4-Wire 240V, 10-60A	W4DLD100600	5000

Analog Time Switch New

Description	Cat. Nos.	M.R.P. (₹) Per Unit
Time Switch 1 Mod (1 NO)	J6107B204	2450
Time Switch 3 Mod (1 C/O)	J6118B304	2400



## Digital Time Switch

Description	Cat. Nos.	M.R.P. (₹) Per Unit
Crono Time Switch, 110-240V AC 1 C/O- 2 Mod	67DDT0	1875
Pulse Time Switch, 110-240V AC 1 C/O- 2 Mod	67DDT9	1825



## Astronomical Time Switch

Description	Cat. Nos.	M.R.P. (₹) Per Unit
Astronomical Time Switch 110-240V 1 C/O - 2 Mod	T2DDT7	3150



## Single Phase ACCL

New

## Automatic Source Changeover with Current Limiter

Description EB/DG (Load)	Cat. Nos.	M.R.P. (₹) Per Unit
30A/1.5A (300W)	ACCL1130010	1500
30A/2.5A (500W)	ACCL1130020	1500
30A/3A (600W)	ACCL1130030	1500
30A/4A (800W)	ACCL1130040	1500
30A/5A (1000W)	ACCL1130050	1500
30A/6A (1200W)	ACCL1130060	1500
30A/8A (1600W)	ACCL1130080	1500
30A/10A (1800W)	ACCL1130100	1500



## Surge Protection Device

New

Description	Cat. Nos.	M.R.P. (₹) Per Unit
<b>Type 2 SPDs - ( 8/20 micro sec)</b>		
40kA, 1P+N, 2 Mod	LPDA2040P2	6125
40kA, 3P+N, 4 Mod	LPDA2040P4	12000
15kA, 1P+N, 2 Mod	LPDA2015P2	5000
15kA, 3P+N, 4 Mod	LPDA2015P4	10005



Description	Cat. Nos.	M.R.P. (₹) Per Unit
<b>Type 1 SPDs - (10/350 micro sec)*</b>		

\* Contact nearest L&T branch office for its availability.

## Contactor

Description	Cat. Nos.	M.R.P. (₹) Per Unit
MR 11W (AC-1 63A, AC-3 25A)	CS94176	660
MR 13 (AC-1 63A, AC-3 40A)	CS94992	725

# Distribution Boards



Distribution boards provide safe & efficient distribution of electrical power.

- As per IS 8623
- Aesthetically superior to suit the interiors
- Suitable for flush and surface mounting
- Ready to use DBs - provided with 100A phase Bus-bar, Neutral bar, Cement Spill Protector, Earth bar and interconnecting wires as standard accessories\*
- Provided with removable top and bottom gland plates with adequate knockouts for easy wiring
- DBs made up of thick CRCA sheet steel & powder coated with RAL 9003 shade
- 200A vertical bus-bar with 10kA for 1 sec fault withstand capacity in VTPN DBs



## SPN Distribution Boards

Description	No. of Modules	Cat. Nos.	M.R.P. (₹) Per Unit
<b>IP30 - Single Door</b>			
6 way	6	LTSC06N	905
8 way	8	LTSC08N	1030
12 way	12	LTSC12N	1220
16 way	16	LTSC16N	1540
18 way	18	LTSC18N	2035
<b>IP43 - Double Door : Plain</b>			
4 way	4	LTSD04N	1155
6 way	6	LTSD06N	1325
8 way	8	LTSD08N	1450
12 way	12	LTSD12N	1790
16 way	16	LTSD16N	2170
18 way	18	LTSD18N	2920
<b>IP43 - Double Door : Glazed</b>			
4 way	4	LTSD04GN	1405
6 way	6	LTSD06GN	1545
8 way	8	LTSD08GN	1650
12 way	12	LTSD12GN	2015
16 way	16	LTSD16GN	2470
18 way	18	LTSD18GN	3050



## TPN Distribution Boards

Description	No. of Modules	Cat. Nos.	M.R.P. (₹) Per Unit
<b>IP30 - Single Door</b>			
4 way +	4 + 12	LTTC04NE	2140
4 way	8 + 12	LTTC04N	2275
6 way	8 + 18	LTTC06N	2765
8 way	8 + 24	LTTC08N	3215
12 way	8 + 36	LTTC12N	4905
<b>IP43 - Double Door : Plain</b>			
4 way +	4 + 12	LTTD04NE	2855
4 way	8 + 12	LTTD04N	2895
6 way	8 + 18	LTTD06N	3555
8 way	8 + 24	LTTD08N	4275
12 way	8 + 36	LTTD12N	6410
16 way	8 + 48	LTTD16N	7845
<b>IP43 - Double Door : Glazed</b>			
4 way +	4 + 12	LTTD04GNE	3295
4 way	8 + 12	LTTD04GN	3470
6 way	8 + 18	LTTD06GN	4265
8 way	8 + 24	LTTD08GN	5020
12 way	8 + 36	LTTD12GN	7660
16 way	8 + 48	LTTD16GN	9305



## TPN Horizontal PPI Distribution Boards

Description	No. of Modules	Cat. Nos.	M.R.P. (₹) Per Unit
<b>IP43 - Double Door : Plain</b>			
4 + 2 way	8 + 6 + 12	LTHPD04N	4650
6 + 2 way	8 + 6 + 18	LTHPD06N	5550
8 + 2 way	8 + 6 + 24	LTHPD08N	6490
10 + 2 way	8 + 6 + 30	LTHPD10N	7590
12 + 2 way	8 + 6 + 36	LTHPD12N	8565
14 + 2 way	8 + 6 + 42	LTHPD14N	9665
<b>IP43 - Double Door : Glazed</b>			
4 + 2 way	8 + 6 + 12	LTHPD04GN	5280
6 + 2 way	8 + 6 + 18	LTHPD06GN	6310
8 + 2 way	8 + 6 + 24	LTHPD08GN	7550
12 + 2 way	8 + 6 + 36	LTHPD12GN	10615



## TPN Tier PPI Distribution Boards

Description	No. of Modules	Cat. Nos.	M.R.P. (₹) Per Unit
<b>IP43 - Double Door : Plain</b>			
6 + 2 way	8 + 6 + 18	LTPPD06N	6510
8 + 2 way	8 + 6 + 24	LTPPD08N	8170
10 + 2 way	8 + 6 + 30	LTPPD10N	8570
12 + 2 way	8 + 6 + 36	LTPPD12N	9320
16 + 2 way	8 + 6 + 48	LTPPD16N	9810
12 + 2 way +	MCCB + 6 + 36	LTPPD12MN	8860
<b>IP43 - Double Door : Glazed</b>			
6 + 2 way	8 + 6 + 18	LTPPD06GN	7270
8 + 2 way	8 + 6 + 24	LTPPD08GN	8370
10 + 2 way	8 + 6 + 30	LTPPD10GN	8665
12 + 2 way	8 + 6 + 36	LTPPD12GN	9720
16 + 2 way	8 + 6 + 48	LTPPD16GN	10160
12 + 2 way +	MCCB + 6 + 36	LTPPD12MGN	9500



Note: Provision to mount MCCB type DH 3P up to 200A and 4P up to 160A as incomer.

## TPN Vertical Distribution Boards (Modular Incomer)

Description	No. of Modules	Cat. Nos.	M.R.P. (₹) Per Unit
<b>IP30 - Single Door</b>			
4 way	8 + 12	LTVC04N	6030
6 way	8 + 18	LTVC06N	7090
8 way	8 + 24	LTVC08N	7560
12 way	8 + 36	LTVC12N	10550
<b>IP43 - Double Door : Plain</b>			
4 way	8 + 12	LTVD04N	7115
6 way	8 + 18	LTVD06N	8660
8 way	8 + 24	LTVD08N	9135
12 way	8 + 36	LTVD12N	12095
16 way	8 + 48	LTVD16N	16665
<b>IP43 - Double Door : Glazed</b>			
4 way	8 + 12	LTVD04GN	8415
6 way	8 + 18	LTVD06GN	10710
8 way	8 + 24	LTVD08GN	13055
12 way	8 + 36	LTVD12GN	14305
16 way	8 + 48	LTVD16GN	17490



## TPN Vertical Distribution Boards (MCCB Incomer)

Description	No. of Modules	Cat. Nos.	M.R.P. (₹) Per Unit
<b>IP43 - Double Door : Plain</b>			
4 way	MCCB + 12	LTVD04MN	8065
6 way	MCCB + 18	LTVD06MN	9835
8 way	MCCB + 24	LTVD08MN	10365
12 way	MCCB + 36	LTVD12MN	13585
16 way	MCCB + 48	LTVD16MN	17170
<b>IP43 - Double Door : Glazed</b>			
4 way	MCCB + 12	LTVD04MGN	9795
6 way	MCCB + 18	LTVD06MGN	11155
8 way	MCCB + 24	LTVD08MGN	12345
12 way	MCCB + 36	LTVD12MGN	15985
16 way	MCCB + 48	LTVD16MGN	19185



Note: Provision to mount MCCB type DH 3P up to 200A and 4P up to 160A as incomer.

## TPN Phase Segregated Distribution Boards

Description	No. of Modules	Cat. Nos.	M.R.P. (₹) Per Unit
<b>IP30 - Single Door : (Modular incomer)</b>			
4 way	8 + 12 + 12	LTPSC04N	6120
6 way	8 + 12 + 18	LTPSC06N	6525
8 way	8 + 12 + 24	LTPSC08N	7100
12 way	8 + 12 + 36	LTPSC12N	8480
<b>IP43 - Double Door : Plain (Modular incomer)</b>			
4 way	8 + 12 + 12	LTPSD04N	7115
6 way	8 + 12 + 18	LTPSD06N	8040
8 way	8 + 12 + 24	LTPSD08N	8800
12 way	8 + 12 + 36	LTPSD12N	11385
<b>IP43 - Double Door : Plain (MCCB incomer)</b>			
4 way	MCCB + 12 + 12	LTPSD04MN	10050
6 way	MCCB + 12 + 18	LTPSD06MN	11480
8 way	MCCB + 12 + 24	LTPSD08MN	13150
12 way	MCCB + 12 + 36	LTPSD12MN	14900

Note: Provision to mount MCCB type DH 3P up to 200A and 4P up to 160A as incomer.



## TPN Phase Selector Distribution Boards

Description	No of Modules	Cat. Nos.	M.R.P. (₹) Per Unit
<b>IP30 - Single Door</b>			
4 way	8 + 12	LTPCC04NS	9050
6 way	8 + 18	LTPCC06NS	9620
8 way	8 + 24	LTPCC08NS	10600
12 way	8 + 36	LTPCC12NS	11560
<b>IP43 - Double Door : Plain</b>			
4 way with single front plate	6 + 12	LTPCD04NES	10120
4 way	8 + 12	LTPCD04NS	10160
6 way	8 + 18	LTPCD06NS	10335
8 way	8 + 24	LTPCD08NS	10845
12 way	8 + 36	LTPCD12NS	12410



## Flexi Distribution Boards

Description	No of Modules	Cat. Nos.	M.R.P. (₹) Per Unit
<b>IP43 - Double Door : Plain</b>			
2 row 28 module	28	LTFD228N	3620
3 row 42 module	42	LTFD342N	4320
4 row 56 module	56	LTFD456N	4740
<b>IP43 - Double Door : Glazed</b>			
2 row 28 module	28	LTFD228GN	3690
3 row 42 module	42	LTFD342GN	4560
4 row 56 module	56	LTFD456GN	4830



## Enclosures

Description	No. of Modules	Cat. Nos.	M.R.P. (₹) Per Unit
1 way	1	LTMC01NE	410
2 way	2	LTMC02N	435
4 way	4	LTMC04N	445
6 way	6	LTMC06N	685



## Metal Plug and Socket DBs

Description	No. of Modules	Cat. Nos.	M.R.P. (₹) Per Unit
10A 2Pin + SC	1	LTMP110N	1060
20A 2Pin + SC	1	LTMP120N	1130
20A 2Pin + SC	2	LTMP220N	1165
20A 3Pin + SC	3	LTMP320N	2380
32A 3Pin + SC	3	LTMP332N	2790
32A 3Pin + SC	4	LTMP432N	2950
63A 5Pin + SC	4	LTMP463N	10370



SC - Scraping Earth

## Plastic Plug and Socket DBs

Description	No. of Modules	Cat. Nos.	M.R.P. (₹) Per Unit
16A 3Pin + SC	4	LTPP316N	1990
32A 3Pin + SC	4	LTPP332N	2700
32A 5Pin + SC	6	LTPP532N	3300
63A 5Pin + SC	8	LTPP563N	9330



SC - Scraping Earth

## Customized Distribution Boards

For TV Telephone DBs, Pre-wired DBs, 8 segment DBs and other customized DBs, please contact nearest L&T office.

## Cable End Boxes

Description	Cat. Nos.	M.R.P. (₹) Per Unit
<b>CEB for SPN DBs</b>		
CEB for 4 Way SPN DD DB	LTSD04CBN	455
CEB for 6 Way SPN DD DB	LTSD06CBN	510
CEB for 8 Way SPN DD DB	LTSD08CBN	515
CEB for 12 Way SPN DD DB	LTSD12CBN	580
CEB for 16 Way SPN DD DB	LTSD16CBN	800
CEB for 18 Way SPN DD DB	LTSD18CBN	870
<b>CEB for TPN DBs</b>		
CEB for 4 Way TPN DD ECO DB	LTTD04CBNE	730
CEB for 4 Way TPN DD DB	LTTD04CBN	840
CEB for 6 Way TPN DD DB	LTTD06CBN	910
CEB for 8 Way TPN DD DB	LTTD08CBN	1360
CEB for 12 Way TPN DD DB	LTTD12CBN	1860
CEB for 16 Way TPN DD DB	LTTD16CBN	2095
<b>CEB for TPN Horizontal PPI DBs</b>		
CEB for 2 + 4 Way Horizontal PPI DD DB	LTHPD04CBN	940
CEB for 2 + 6 Way Horizontal PPI DD DB	LTHPD06CBN	1465
CEB for 2 + 8 Way Horizontal PPI DD DB	LTHPD08CBN	1675
CEB for 2 + 12 Way Horizontal PPI DD DB	LTHPD12CBN	1980
<b>CEB for TPN Tier PPI DBs</b>		
CEB for 2 + 6 Way Tier PPI DD DB	LTPPD06CBN	880
CEB for 2 + 8 Way Tier PPI DD DB	LTPPD08CBN	920
CEB for 2 + 10 Way Tier PPI DD DB	LTPPD10CBN	1120
CEB for 2 + 12 Way Tier PPI DD DB	LTPPD12CBN	1675
CEB for 2 + 12 Way Tier PPI DD DB (MCCB)	LTPPD12MCBN	1880
<b>CEB for Vertical TPN DBs</b>		
CEB for Vertical DD (Modular I/C)	LTVDXXCBN	725
CEB for Vertical DD (MCCB I/C)	LTVDXXMCBN	2270
<b>CEB for Flexi DBs</b>	LTFDXXCBN	725
<b>CEB for Phase Segregated DB</b>		
CEB for 4 Way TPN Modular (I/C) DB	LTPSD04CBN	1385
CEB for 6 Way TPN Modular (I/C) DB	LTPSD06CBN	1655
CEB for 8 Way TPN Modular (I/C) DB	LTPSD08CBN	2200
CEB for 12 Way TPN Modular (I/C) DB	LTPSD12CBN	3290
CEB for 4 Way MCCB (I/C) DB	LTPSD04MCBN	1690
CEB for 6 Way MCCB (I/C) DB	LTPSD06MCBN	2025
CEB for 8 Way MCCB (I/C) DB	LTPSD08MCBN	2380
CEB for 12 Way MCCB (I/C) DB	LTPSD12MCBN	3555

## General Terms

All prices are on maximum retail price basis inclusive of Excise Duty and VAT / Sales Tax as applicable.

Prices are subject to revision without notice.

## Warranty Policy

All the products listed in the price list carry a warranty, against manufacturing defects for a period of 18\* months from the date of purchase.

Should the product prove to be defective due to faulty workmanship or otherwise, we will remedy the defect or replace the faulty parts or the whole product at our discretion, as soon as possible, free of cost.

The warranty is however subject to the provision of proper usage, efficient maintenance and does not cover defects arising out of fire, accident, inefficient maintenance, faulty operation and willful or accidental damage. It also does not cover damage to power electronic components like thyristors & IGBTs, which fail predominantly due to over-temperature & over-voltage. The user needs to take adequate precautions to eliminate these conditions. The manufacturer shall not be liable for any consequential loss, injury or damages attributable to defect or failure of its products.

## Comprehensive Service Support

L&T has over four decades of experience in providing after sales service for low voltage distribution systems in every type of industry & commercial complex in India.

L&T offers the following services, partnering you in your maintenance of low voltage distribution products :

- Regular Maintenance
- Preventive Maintenance Programme
- On Call
- Annual Maintenance Contract
- Product Support for Managing Obsolescence - Retrofitting & Upgradation of your switchgear products

\* Proof of purchase to be retained to avail warranty

## Electrical Standard Products (ESP) Branch Offices:

### REGISTERED OFFICE AND HEAD OFFICE

L&T House, Ballard Estate  
P. O. Box 278  
**Mumbai 400 001**  
Tel: 022-67525656  
Fax: 022-67525858  
Website: www.Larsentoubro.com

### ELECTRICAL STANDARD PRODUCTS (ESP)

501, Sakar Complex I  
Opp. Gandhigram Rly. Station  
Ashram Road  
**Ahmedabad 380 009**  
Tel: 079-66304006-11  
Fax: 079-66304025  
e-mail: esp-ahm@LNTEBG.com

38, Cubbon Road, P. O. Box 5098  
**Bangalore 560 001**  
Tel: 080-25020100 / 25020324  
Fax: 080-25580525  
e-mail: esp-blr@LNTEBG.com

131/1, Zone II  
Maharana Pratap Nagar  
**Bhopal 462 011**  
Tel: 0755-3080511 / 05 / 08 / 13 / 17 / 19  
Fax: 0755-3080502  
e-mail: esp-bho@LNTEBG.com

Plot No. 559, Annapurna Complex  
Lewis Road  
**Bhubaneswar 751 014**  
Tel: 0674-6451342, 2436690, 2436696  
Fax: 0674-2537309  
e-mail: nayakd@LNTEBG.com

SCO 32, Sector 26-D  
Madhya Marg, P. O. Box 14  
**Chandigarh 160 019**  
Tel: 0172-4646840, 4646853  
Fax: 0172-4646802  
e-mail: esp-chd@LNTEBG.com

L&T Construction Campus  
TC-1 Building, II Floor  
Mount-Poonamallee Road  
Manapakkam  
**Chennai 600 089**  
Tel: 044-2270 6800  
Fax: 044-22706940  
e-mail: esp-maa1@LNTEBG.com

67, Appuswamy Road  
Post Bag 7156  
Opp. Nirmala College  
**Coimbatore 641 045**  
Tel: 0422-2588120 / 1 / 5  
Fax: 0422-2588148  
e-mail: esp-cbe@LNTEBG.com

Khairasol, Degaul Avenue  
**Durgapur 713 212**  
Tel: 2559848, 2559849, 2559844  
Fax: 0343-2553614  
e-mail: esp-dgp@LNTEBG.com

5, Milanpur Road, Bamuni Maidan  
**Guwahati 781 021**  
Tel: +91 8876554410 / 8876554417  
Fax: 361-2551308  
e-mail: hazrasudipto@LNTEBG.com

II Floor, Vasantha Chambers  
5-10-173, Fateh Maidan Road  
**Hyderabad 500 004**  
Tel: 040-67015052  
Fax: 040-23296468  
e-mail: esp-hyd@LNTEBG.com

Monarch Building, 1st Floor  
D-236 & 237, Amrapali Marg  
Vaishali Nagar  
**Jaipur 302 021**  
Tel: 0141-4385914 to 18  
Fax: 0141-4385925  
e-mail: esp-jai@LNTEBG.com

Akashdeep Plaza, 2nd Floor  
P. O. Golmuri  
**Jamshedpur 831 003**  
Jharkhand  
Tel: 0657-2312205 / 38  
Fax: 0657-2341250  
e-mail: esp-jam@LNTEBG.com

Skybright Bldg; M. G. Road  
Ravipuram Junction, Ernakulam  
**Kochi 682 016**  
Tel: 0484-4409420 / 4 / 5 / 7  
Fax: 0484-4409426  
e-mail: esp-cok@LNTEBG.com

3-B, Shakespeare Sarani  
**Kolkata 700 071**  
Tel: 033-44002572 / 3 / 4  
Fax: 033-22821025 / 7587  
e-mail: esp-ccu@LNTEBG.com

A28, Indira Nagar, Faizabad Road  
**Lucknow 226 016**  
Tel: 0522-4929905 / 04  
Fax: 0522-2311671  
e-mail: esp-Lko@LNTEBG.com

No: 73, Karpaga Nagar, 8th Street  
K. Pudur  
**Madurai 625 007**  
Tel: 0452-2537404, 2521068  
Fax: 0452-2537552  
e-mail: esp-mdu@LNTEBG.com

EBG North Wing Office-Level 2  
Gate 7, Powai Campus  
**Mumbai 400 072**  
Tel: 022-67052874 / 2737 / 1156  
Fax: 022-67051112  
e-mail: esp-bom@LNTEBG.com

12, Shivaji Nagar  
North Ambajhari Road  
**Nagpur 440 010**  
Tel: 0712-2260012 / 6606421  
Fax: 2260030 / 6606434  
e-mail: esp-nag@LNTEBG.com

32, Shivaji Marg  
P. O. Box 6223  
**New Delhi 110 015**  
Tel: 011-41419514 / 5 / 6  
Fax: 011-41419600  
e-mail: esp-del@LNTEBG.com

L&T House  
P. O. Box 119  
191/1, Dhole Patil Road  
**Pune 411 001**  
Tel: 020-66033395 / 66033279  
Fax: 020-26164048 / 26164910  
e-mail: esp-pnq@LNTEBG.com

Crystal Tower,  
4th Floor, G. E. Road  
Telibandha  
**Raipur - 492 006**  
Tel: 0771-4283214  
e-mail: esp-raipur@LNTEBG.com

3rd Floor  
Vishwakarma Chambers  
Majura Gate, Ring Road  
**Surat 395 002**  
Tel: 0261-2473726  
Fax: 0261-2477078  
e-mail: esp-sur@LNTEBG.com

Radhadaya Complex  
Old Padra Road  
Near Charotar Society  
**Vadodara 390 007**  
Tel: 0265-6613610 / 1 / 2  
Fax: 0265-2336184  
e-mail: esp-bar@LNTEBG.com

48-8-16, Dwarakanagar  
**Visakhapatnam 530 016**  
Tel: 0891-6701125 to 30  
Fax: 0891-6701139  
e-mail: esp-viz@LNTEBG.com

Product improvement is a continuous process. For the latest information and special applications, please contact any of our offices listed here.  
Product photographs shown, are for representative purpose only.



Larsen & Toubro Limited Electrical Standard Products  
Powai Campus, Mumbai 400 072  
**Customer Interaction Center (CIC)**  
BSNL / MTNL (toll free) : 1800 233 5858  
Reliance (toll free) : 1800 200 5858  
Tel : 022 6774 5858, Fax : 022 6774 5859  
E-mail : cic@LNTEBG.com Website : www.LNTEBG.com

Registered Office: L&T House, N. M. Marg, Ballard Estate, Mumbai 400 001, INDIA

SP 50580 R5